

# anko

## Texture Canvas Art Kit Instruction Manual

### Kit Includes

- > 2 x stretched canvases
- > 5 x acrylic paints
- > 2 x modelling pastes
- > 1 x paint palette
- > 2 x plastic knives
- > 2 x paint brushes
- > 1 x plastic scraper
- > 1 x instruction sheet

### Tips

- > Acrylic paints and modelling paste should be well mixed and blended.
- > Wait for the first coat of base color to dry before adding more paint.
- > The mixture needs to be adjusted with the back of the plastic knife to get a full and complete shape.
- > Do not handle completed artwork until completely dry.
- > Wearing gloves is recommended.



Guide Image

### How To Make A Texture Canvas Art

1



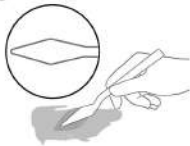
Mix the modelling paste choose with your desired acrylic point colours and mix until blended. Add more paint to brighten colours, or more modelling paste to lighten colours.

2



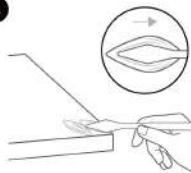
Take some modelling paste mixture onto a flat surface and mix.

3



Form a shape and scoop mixture onto the back of the palette knife ready to apply to the artwork.

4



Apply the modelling paste to the canvas and gently press down and slide away, to make an indent in the form and make a petal shape. The direction is from corners to center.

5



Cover the canvas with a variety of petal and leaf colours. Wait 24 hours after completion to dry and display your artwork.

# anko

### How To Make A Texture Canvas Art

1



Paint the base colour and allow to dry.

2



Mix the modelling paste choose with your desired acrylic point colours and mix until blended. Add more paint to brighten colours, or more modelling paste to lighten colours.



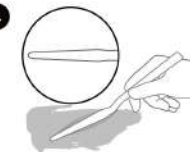
Guide Image

3



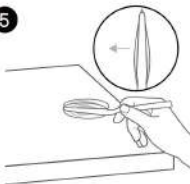
Take some modelling paste mixture onto a flat surface and mix.

4



Form a shape and scoop mixture onto the back of the palette knife ready to apply to the artwork.

5



Apply the modelling paste to the canvas and gently press down and slide away, to make an indent in the form and make a petal or leaf shape.

6



Cover the canvas with a variety of petal and leaf colours. Wait 24 hours after completion to dry and display your artwork.

MADE IN CHINA

CUSTOMER SERVICE:  
KMART AU: 1800 124 125  
KMART NZ: 0800 945 995  
TARGET AU: 1300 753 567

KEYCODE  
K: 43-470-440 | T: 70-98-232