

INSTRUCTION MANUAL

RAINING AROMA DIFFUSER



K: 43482245 | T: 70226461
SLR-24625

IMPORTANT! Care should be taken with the use of diffusers around animals. Both the choice of essential oils and where animals are should be taken into consideration when in use.

IMPORTANT SAFETY INSTRUCTIONS:

The following safety precautions should always be followed, to reduce the risk of electric shock, personal injury or fire. It is important to read all of these instructions carefully before using the product, and to save them for future reference or new users.

The appliance must only be supplied by AS/NZS 61558.2.16 certified SELV power supply with output 5V 2A.

For filling, please refer to "OPERATION INSTRUCTIONS" section.

For cleaning and descaling, please refer to MAINTAINANCE section.

Unplug the appliance during filling and cleaning.

1. This product must only be used as intended in accordance with the enclosed operating instructions.
2. **DO NOT** carry the appliance by the mains cable or pull the cable to remove the plug from the socket.
3. **DO NOT** use if the USB Type-C cable or diffuser is damaged. If the diffuser malfunctions, is damaged or is immersed in water, stop using the diffuser, seek professional advice to rectify the fault or make repairs.
4. Switch off the power supply or unplug from the mains socket when not in use, before cleaning or changing accessories.
5. Avoid positioning the appliance where the USB cable might be accidentally trapped or damaged.
6. Use provided USB Type-C cable only.
7. Ensure the appliance is switched OFF before connecting the mains power supply.
8. **DO NOT** use the diffuser on flammable surfaces or near flammable materials, heat sources or open flames. Also, keep the diffuser away from sharp objects or anything that may cause damage.
9. **DO NOT** touch the ultrasonic disc with a finger or scrape it with metal tools to avoid damage to the disc.
10. Be aware that some surfaces may become hot. Do not touch hot surfaces and supervise others accordingly.
11. This appliance is not intended for use by persons (including children) with reduced physical, sensory or mental capabilities, or lack of experience and knowledge, unless they have been given supervision or instruction concerning use of the appliance by a person responsible for their safety.

12. Children should be closely supervised at all times when they are near the appliance, and make sure they don't play with appliance.
13. **DO NOT** immerse the diffuser in water or any other liquid.
14. Always ensure that hands are dry before operating or adjusting any switch on the product or touching the adaptor and mains supply connections.
15. To disconnect, first ensure that all controls are in the close position, then remove the cable from the electricity supply.
16. Where relevant keep all ventilation slots, filters, etc. uncovered and clear of debris. Never drop or insert objects into the openings.
17. Always use fragrance with water. Do not use fragrance on its own.
18. Volatile liquids (such as perfume enhancers, perfume, etc.) are strictly, and water-soluble essential oils must be used. Acidic oil can damage the diffuser. Check the instructions of the oil or fragrance carefully, the use of other substances may give rise to a toxic or create a fire risk.
19. When there is too little or no water in the water tank, the equipment will automatically power off and stop working.
20. **DO NOT** leave the diffuser on or unattended overnight.
21. Always unplug the diffuser from the electrical supply when filling and cleaning.
22. Do not use outdoors. This appliance has been designed for domestic indoor dry location use only.
23. Water spillage may occur during use, please ensure that the surface the item is placed on is protected and keep item some distance away from power socket.

Product specification

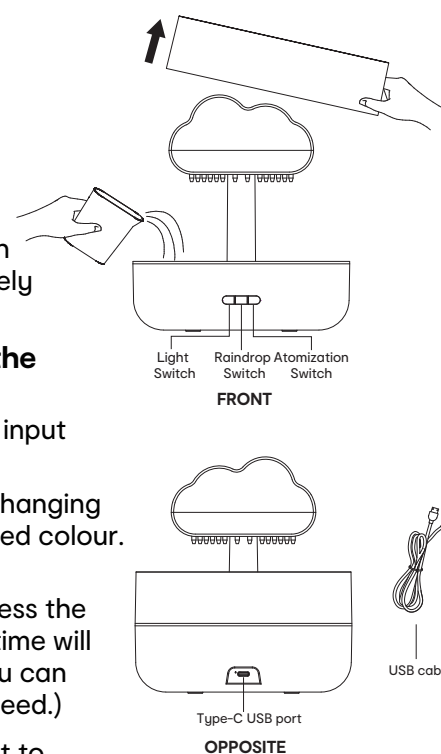
Input: DC 5V, 2000mA (via USB)
Wattage: Max. 10W

Operation instructions

1. Pick up the lid before use.
2. The maximum water volume of the water tank is 200ml, and the water injection volume shall not exceed the maximum water level indicator line. Add approximately 6 drops of essential oils to the water.

Warning: Do not fill water over the max water level marking, otherwise the atomization effect will be affected.

3. Connect the diffuser with the provided USB cable to an adaptor (not included) input DC 5V 2000mA.
4. Press the "LIGHT SWITCH" button to turn on the light and activate the colour changing function. Press the "LIGHT SWITCH" button again to pause on the current displayed colour. Pressing a 3rd time will turn off the light function.
5. Press the "RAINDROP SWITCH" button, the raindrops to be in light rain level. Press the "RAINDROP SWITCH" button again, raindrops will be more heavy. Pressing a 3rd time will turn off the raindrops falling. (It is normal for some holes to not release water. You can try to open the cover and using tools to make the raindrops fall normally if you need.)
6. Press the "Atomization Switch" button and wait for several seconds for the mist to come out. Press the "Atomization Switch" button again and the mist will stop. It will stop the light also.



Attention

1. Do not use as medical respirator.
2. Do not use the product when there is an abnormal noise or the diffuser is overheating abnormally.
3. Do not cover or block the mist outlet or air inlet.
4. Do not use inferior essential oils. Use 100% pure essential oils.
5. Do not take off the cover during operation of the diffuser.
6. Do not place near an electric device such as a computer, TV or audio equipment.
7. Do not use hot water or mineral water. Always use tap water or distilled water.
8. Keep out reach of children or pets.

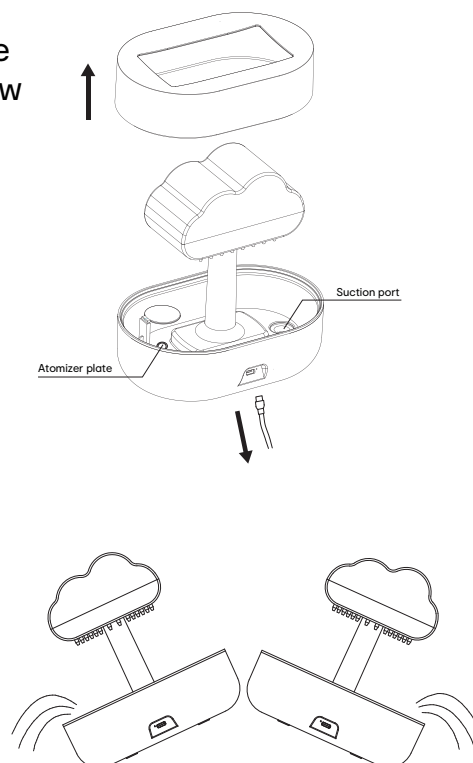
Maintenance

To help ensure a long working life, please properly maintain the diffuser. It's necessary to maintain the diffuser as outlined below once it has been used 5-6 times or for 2-3 consecutive days.

1. Turn off all switches and disconnect the USB cable from the diffuser base. Take off the cover while keeping the diffuser completely level. **DO NOT** tip from side to side.
2. If there's water left in the tank, please pour out the remaining water from both sides.
3. Use a gentle diluted mild kitchen detergent on a damp cloth to remove any essential oil residue, ensuring no detergent remains.
IMPORTANT: DO NOT press heavily or scratch the ultrasonic mechanism in the water tank during cleaning.
4. Add water **without essential oil** into the tank to Max level. Turn on the atomization switch and raindrop switch, after 30 minutes pour out remaining water and gently wipe the water tank clean, especially the atomizer plate and suction port of the pump.

Please **DO NOT** use chlorine or acidic based detergents for cleaning outside or inside of the diffuser.

Please use neutral detergents like diluted kitchen detergents.



Trouble shooting

| Problem | Possible Reasons | Solution |
|--------------------------------------|---|---|
| Unit does not work | USB power not connected. | Connect power with provided USB cable and press the button. |
| | USB power device failure. | Change USB power device. |
| | USB device output power is not good enough. | Change USB power device, check the output power is 5V DC 2A. |
| Unable to spray mist or spray is bad | Water tank might be dirty. | Clean the water tank. |
| | Too much water might be inside the tank. | Make sure water inside tank is not over. |
| | Water level very low. | Fill with more water. |
| Raindrops performance is not good | There is two levels for the raining. You might only press once on the raindrops switch. | Press the raindrops switch twice to turn on the high level. |
| | There are some bubbles in the holes of raindrops. | Use small tool through the holes to make the raindrops fall down. |

Caution: Don't shake or tilt the product when there is water in the container or else the product may not work correctly.



12 Month Warranty

Thank you for your purchase.

Your new product is warranted to be free from defects in materials and workmanship for the period stated above, from the date of purchase, provided that the product is used in accordance with accompanying recommendations or instructions where provided. This warranty is in addition to your rights under the Australian Consumer Law.

For New Zealand customers, this warranty is in addition to statutory rights observed under New Zealand legislation.

We will provide you with your choice of a refund, repair (where possible) or exchange (availability dependent) for this product if it becomes defective within the warranty period. The business will bear the reasonable expense of claiming the warranty.

This warranty will no longer apply where the defect is a result of alteration, accident, misuse, abuse or neglect.

Please retain your receipt as proof of purchase and contact our Customer Service Centre as listed below, for the entity you purchased this product from, for any difficulties with your product. Warranty claims and claims for expense incurred in returning this product can be addressed to the respective Customer Service Centre.

Our goods come with guarantees that cannot be excluded under the Australian Consumer Law. You are entitled to a replacement or refund for a major failure and compensation for any other reasonably foreseeable loss or damage. You are also entitled to have the goods repaired or replaced if the goods fail to be of acceptable quality and the failure does not amount to a major failure.

| Contact for Kmart purchases | Contact for Target purchases |
|--|--|
| Kmart Australia Ltd. C/- Customer Service Centre 690 Springvale Road, Mulgrave Vic 3170 Customer Service: 1800 124 125 (Australia) or 0800 945 995 (New Zealand) or via Customer Help at kmart.com.au | Target Australia Pty Ltd C/- Customer Service Centre 2 Kendall Street, Williams Landing, Vic, 3027 Customer Service: 1300 753 567 or via Customer Help at target.com.au/help/contact-us |