

3+
years

Portable Folding Lap Desk

— INSTRUCTIONS —

TO OPEN LAP DESK



1

FIRST OPEN ONE LEG,
THEN THE OTHER.

2

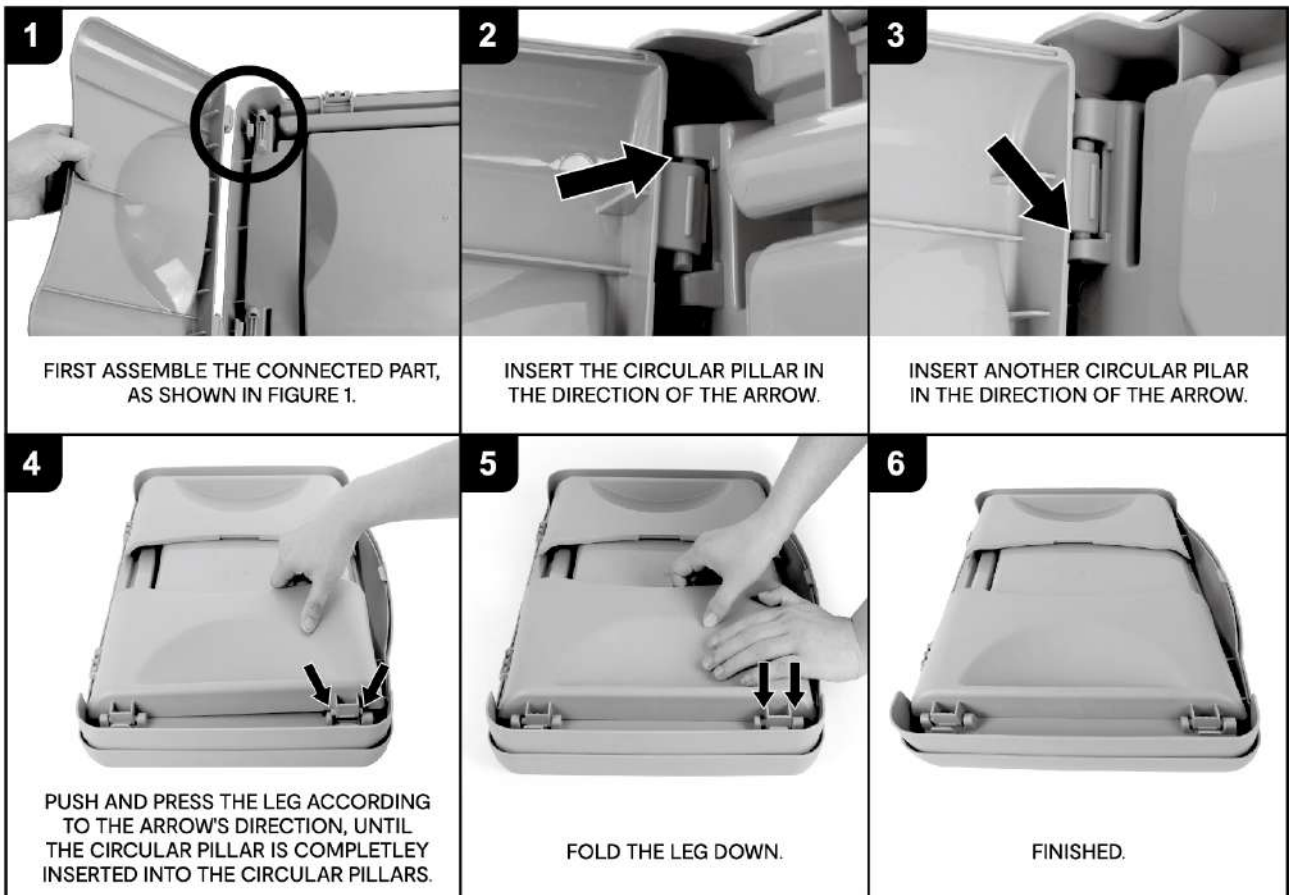
TURN OVER TO USE AS A DESK.

3

OPEN THE LID TO USE THE
STORAGE COMPARTMENT.



IF A LEG DETACHES FROM THE FOLDING LAP DESK, YOU CAN ASSEMBLE THE LEG ACCORDING TO THE FOLLOWING INSTRUCTIONS.
NOTE: THE ASSEMBLY OPERATIONS IS REQUIRED BY AN ADULT.



1

FIRST ASSEMBLE THE CONNECTED PART,
AS SHOWN IN FIGURE 1.

2

INSERT THE CIRCULAR PILLAR IN
THE DIRECTION OF THE ARROW.

3

INSERT ANOTHER CIRCULAR PILLAR
IN THE DIRECTION OF THE ARROW.

4

PUSH AND PRESS THE LEG ACCORDING
TO THE ARROW'S DIRECTION, UNTIL
THE CIRCULAR PILLAR IS COMPLETELY
INSERTED INTO THE CIRCULAR PILLARS.

5

FOLD THE LEG DOWN.

6

FINISHED.

WARNING: DO NOT SIT OR STAND ON THE DESK.

MADE IN CHINA

CUSTOMER SERVICE:

KMART AU: 1800 124 125 | KMART NZ: 0800 945 995 | TARGET AU: 1300 753 567

K: 43-489-190

T: 70-383-478