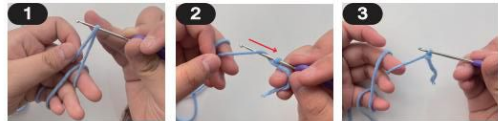


## BASIC CROCHET STITCH DIAGRAM

### 1. Stitch (Abbreviated 'st')

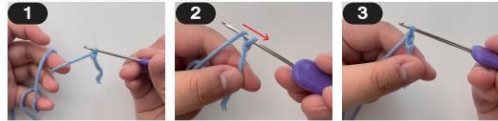
#### Slip knot

Every piece of crochet chain starts with a slip knot. Loop the yarn around two fingers (leaving a tail) and pull the tail halfway through the loop. Insert the crochet hook into the second loop and gently pull the loop taut onto the crochet hook.



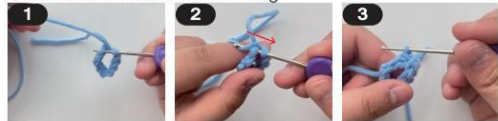
### 2. Chain Stitch (Abbreviated 'ch')

The chain stitch is the basis for all crochet which is also called a foundation chain.



### 3. Slip Stitch (Abbreviated 'sl st')

The slip stitch is the flattest or smallest of all crochet stitches. You can use this stitch by slip-stitching the ends of a foundation chain to form a ring.



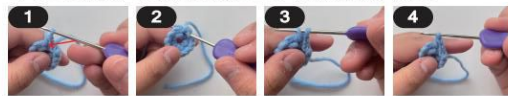
### 4. Single Crochet (Abbreviated 'sc')

The single crochet is the most fundamental of all stitches. Gather the yarn with your crochet hook and draw up the loop through the stitch. Wrap the yarn around the hook and pull it through two loops, leaving one loop on the hook.



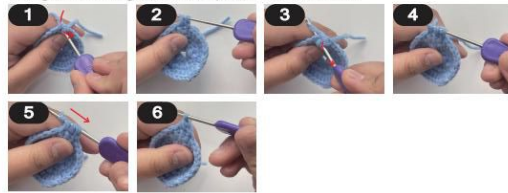
### 5. Increase (Abbreviated 'inc')

You can increase stitches by adding a stitch at the beginning of the row. For example, make 2 sc in the same knot.



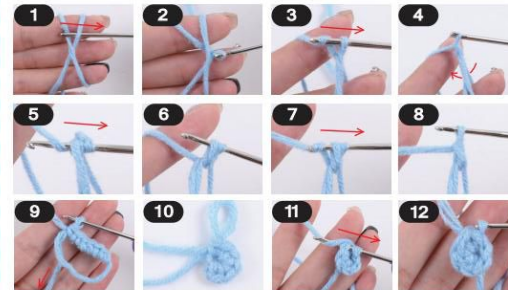
### 6. Decrease (Abbreviated 'dec')

You can decrease stitches, which is really just subtracting a stitch, in a row. Make a half sc, at which point there are 2 loops in the hook, then crochet a half sc in the next knot, at which point there are 3 loops in the hook, and finally wind the yarn through all 3 loops to finish a dec.



### 7. Magic Ring

A magic ring is an adjustable starting round used for crochet amigurumi patterns, granny squares and other patterns that work in crochet rounds. Form a loop with your yarn. You will need to loop the yarn around your fingers, insert the hook through the loop. Slide the crochet hook under right piece of yarn from right to left, use the hook tip to grab onto a left yarn, pull the yarn through the ring, make a chain stitch. Put your first row of stitches into the ring. For example, make 6 sc. Pull yarn ends. Hold the working end of the yarn taut while gently pulling down on the tail end. As you do this, the stitches should close together at the center, completing your magic ring. Finally, slip stitch into the first stitch. To close this round and start the remainder of your pattern, make a slip stitch into the first stitch of your ring, and proceed to the next round.



### 8. Round (Abbreviated 'Rd')

This continues the chain stitches into a circle. Each round starts with ch and ends with sl st.

### 9. Sewing

Generally used for the connection of 2 parts. The plastic needle strap yarns are threaded in turn through the knots where the two parts need to be connected.



If details need to be stitched onto the finished product (such as mouth, eyes, etc). Use the plastic needle and thread to create small stitches to represent facial features etc.



### 10. Weaving In/Invisible Close

Cut the yarn, leaving a long yarn end. Draw the end through the final loop on the hook and thread it onto a yarn needle. Weave your needle through the front loops only on the last round and pull tight. Weave remaining yarn into your piece.



Please noted that all yarns needs to be hidden behind the stitch.

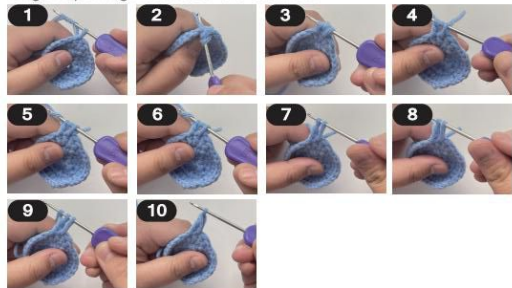
### 11. Fasten Off (Abbreviated 'F/O')

Fasten off by pulling the yarn through the end stitch and pulling it taut. Cut off.



### 12. Triple Crochet (Abbreviated 'tr')

The triple crochet is also called a treble crochet, creates longer openings between the stitches.



### 13. Insert Your Hook Into 2nd Back Hoop

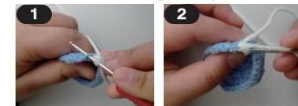


### 14. Back Loop Only (Abbreviated 'blo')

Work with the single loop stitch furthest from your body. (Fig. 1)

### 15. Front Loop Only (Abbreviated 'fol')

Work with the single loop stitch closest to your body. (Fig. 2)



### STITCHES USED

ch chain ( ) repeat the step between the brackets  
sl slip stitch x repeat steps x times  
sc single crochet F/o fasten off  
inc increase crochet  
dec decrease crochet

### MAKE A CROCHET WHALE

#### 1. Body

(Please use the blue yarns)

R1: 6 sc in magic ring [6 sts]

R2: 6 inc [12 sts]

R3: (sc, inc) x 6 times [18 sts]

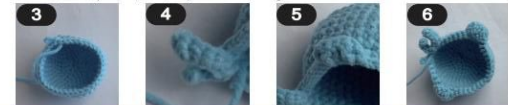
R4: (2 sc, inc) x 6 times [24 sts]

R5: (3 sc, inc) x 6 times [30 sts]

R6: (4 sc, inc) x 6 times [36 sts]

R7-13: 36 sc [36 sts]

R14: (blo, 7 ch, insert your hook into 2nd back hoop to make 6 sc, 8 ch, insert your hook into 2nd back hoop to make 7 sc) in first stitch, start at the first stitch, 7 sc, blo [(3 ch, 1 tr) in a stitch, (3 ch, 1 tr, sl) in a stitch], 16 sc, blo [(3 ch, 1 tr) in a stitch, 1 tr, (3 ch, 1 tr, sl) in a stitch]



(Please change to the white yarns)

R15: 36 sc [36 sts] R16: (4 sc, dec) x 6 times [30 sts]

R17: (3 sc, dec) x 6 times [24 sts]

R18: (2 sc, dec) x 6 times [18 sts]

R19: (sc, dec) x 6 times [12 sts]

Fill with the fiberfill. R20: 6 dec [6 sts] F/O



#### 2. Horn

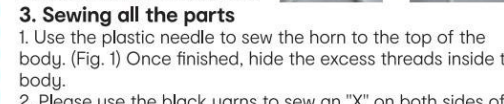
(Please use the white yarns)

R1: 3 sc in magic ring [3 sts]

R2: 3 inc [6 sts]

R3: 6 sc [6 sts]

R4: (2 sc, inc) x 2 times [8 sts]



#### 3. Sewing all the parts

1. Use the plastic needle to sew the horn to the top of the body. (Fig. 1) Once finished, hide the excess threads inside the body.

2. Please use the black yarns to sew an "X" on both sides of R12 of the body as the whale's eyes. (Fig. 2-3)



MADE IN CHINA

CUSTOMER SERVICE:

KMART AU: 1800 124 125

KMART NZ: 0800 945 995

TARGET AU: 1300 753 567

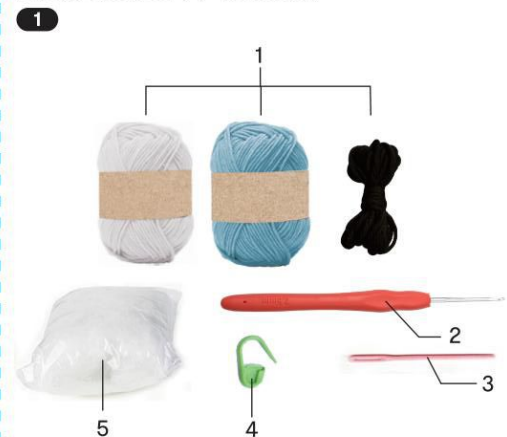
K: 43-494-347

T: 70-293-463

anko

## Mini Crochet Kit Whale Instruction Manual

14+ years



### WHAT'S IN THE BOX

1. Crochet yarn x 3
2. Crochet hook x 1
3. Plastic needle x 1
4. Ring stitch marker x 1
5. 10g fiberfill x 1