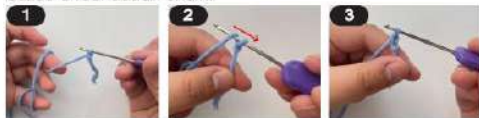


**BASIC CROCHET STITCH DIAGRAM****1. Stitch (Abbreviated 'st')****Slip knot**

Every piece of crochet chain starts with a slip knot. Loop the yarn around two fingers (leaving a tail) and pull the tail halfway through the loop. Insert the crochet hook into the second loop and gently pull the loop taut onto the crochet hook.

**2. Chain Stitch (Abbreviated 'ch')**

The chain stitch is the basis for all crochet which is also called a foundation chain.

**3. Slip Stitch (Abbreviated 'sl st')**

The slip stitch is the flattest or smallest of all crochet stitches. You can use this stitch by slip-stitching the ends of a foundation chain to form a ring.

**4. Single Crochet (Abbreviated 'sc')**

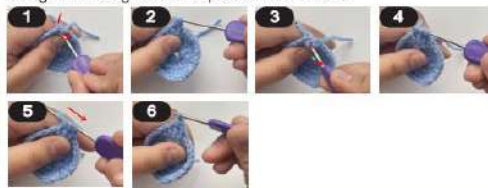
The single crochet is the most fundamental of all stitches. Gather the yarn with your crochet hook and draw up the loop through the stitch. Wrap the yarn around the hook and pull it through two loops, leaving one loop on the hook.

**5. Increase (Abbreviated 'inc')**

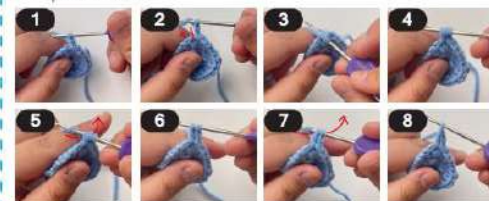
You can increase stitches by adding a stitch at the beginning of the row. For example, make 2 sc in the same knot.

**6. Decrease (Abbreviated 'dec')**

You can decrease stitches, which is really just subtracting a stitch, in a row. Make a half sc, at which point there are 2 loops in the hook, then crochet a half sc in the next knot, at which point there are 3 loops in the hook, and finally wind the yarn through all 3 loops to finish a dec.

**7. Double Crochet (Abbreviated 'Dc')**

The double crochet is one of the most common crochet stitches and is about twice as tall as a single crochet. Wrap the yarn around the crochet hook. Then insert the crochet hook into the next stitch loop. Wrap the yarn with your crochet hook and pull the loop through the stitch (three loops now on the hook). Wrap the yarn around the hook again and pull it through the first two loops, leaving two loops on the hook. Then, wrap the yarn around the hook again and bring it through the remaining two loops to leave only one loop on the hook. Complete the row.

**8. Fasten Off (Abbreviated 'F/O')**

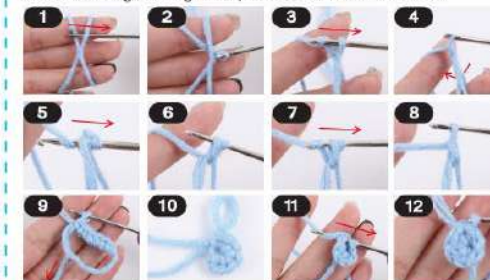
Fasten off by pulling the yarn through the end stitch and pulling it taut. Cut off.

**9. Round (Abbreviated 'Rd')**

This continues the chain stitches into a circle. Each round starts with ch and ends with sl st.

**10. Magic Ring**

A magic ring is an adjustable starting round used for crochet amigurumi patterns, granny squares and other patterns that work in crochet rounds. Form a loop with your yarn. You will need to loop the yarn around your fingers, insert the hook through the loop. Slide the crochet hook under right piece of yarn from right to left, use the hook tip to grab onto a left yarn, pull the yarn through the ring, make a chain stitch. Put your first row of stitches into the ring. For example, make 6 sc. Pull yarn ends. Hold the working end of the yarn taut while gently pulling down on the tail end. As you do this, the stitches will close together at the center, completing your magic ring. Finally, slip stitch into the first stitch. To close this round and start the remainder of your pattern, make a slip stitch into the first stitch of your ring, and proceed to the next round.

**11. Sewing**

Generally used for the connection of 2 parts. The plastic needle strap yarns are threaded in turn through the knots where the two parts need to be connected.



If details need to be stitched onto the finished product (such as mouth, eyes, etc). Use the plastic needle and thread to create small stitches to represent facial features etc.

**12. Weaving In/Invisible Close**

Cut the yarn, leaving a long yarn end. Draw the end through the final loop on the hook and thread it onto a yarn needle. Weave your needle through the front loops only on the last round and pull tight. Weave remaining yarn into your piece.



Please noted that all yarns needs to be hidden behind the stitch.

**STITCHES USED**

<b>ch</b>	chain	<b>dec</b>	decrease
<b>sl</b>	slip stitch	( )	repeat the step between the brackets
<b>sc</b>	single crochet	<b>x</b>	repeat steps x times
<b>inc</b>	increase crochet	<b>F/o</b>	fasten off
<b>dc</b>	double crochet		

**MAKE A CROCHET GRANNY SQUARE HEADBAND****1. Square pieces x 6**

R1: (Please use the orange yarns) 4 ch, sl, 3 ch, 2 dc, 2 ch, (3 dc, 2 ch) x 3 times [12 sts]

R2: (Please use the white yarns) (3 dc, 2 ch, 3 dc, ch) x 4 times [24 sts] (Note: Each stitch is completed on each of 4 corners of R1.)

R3: (Please use the turquoise yarns) [(3 dc, ch), (3 dc, 2 ch, 3 dc, ch)] x 4 times [36 sts] (Note: Each (3 dc, ch) is completed at the each middle of R2, and each (3 dc, 2 ch, 3 dc, ch) is at each of 4 corners of R2.)

Now you have finished 1x square pieces.



Repeat the above steps to make 6x square pieces (Note: You can choose any colour combination you like).

**2. Connect all square pieces**

- Take 2 of the squares and line the edges up.
- Use the plastic needle and some extra thread to sew the pieces together. Pull the thread in between the loops of each square to connect. (Fig 1-2)
- Knot the thread at the end and cut. Hide the excess within one of the loops.
- Continue with the rest of the squares to connect all square pieces. (Fig. 3)

**3. Headband border**

(Please use the purple yarns)

Make 210 sc at each outermost knot. [210 sts]

**4. Headband ends**

(Please use the purple yarns)

R1: 15 dc [15 sts]

R2: dc-dec, 11 dc, dc-dec [13 sts]

R3: dc-dec, 9 dc, dc-dec [11 sts]

R4: dc-dec, 7 dc, dc-dec [9 sts]

R5: dc-dec, 5 dc, dc-dec [7 sts]

R6: dc-dec, 3 dc, dc-dec [5 sts]

R7: dc-dec, 1 dc, dc-dec [3 sts]

**5. Headband string**

(Please use the purple yarns)

Make 51 ch. (Note: Make the string as long as you need for your head.)



MADE IN CHINA

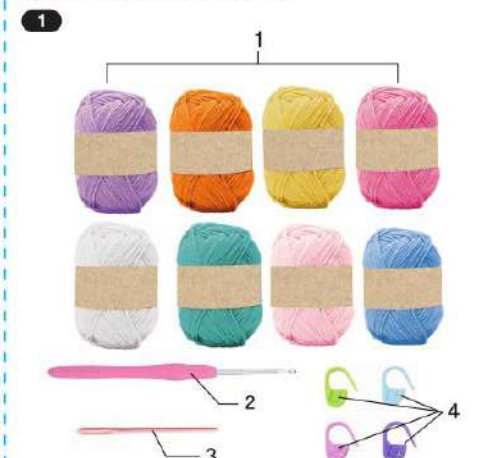
CUSTOMER SERVICE:  
KNART AU: 1800 124 125  
KNART NZ: 0800 945 995  
TARGET AU: 1300 753 567

K: 43-494-415  
T: 70-293-531

anko

**DIY Crochet Headband Kit Instruction Manual**

14+ years

**WHAT'S IN THE BOX**

- Crochet yarn x 8
- Crochet hook x 1
- Plastic needle x 1
- Ring stitch marker x 4