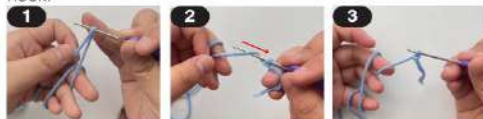


BASIC CROCHET STITCH DIAGRAM

1. Stitch (Abbreviated 'st')

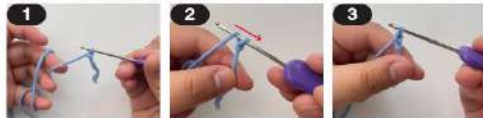
Slip knot

Every piece of crochet chain starts with a slip knot. Loop the yarn around two fingers (leaving a tail) and pull the tail halfway through the loop. Insert the crochet hook into the second loop and gently pull the loop taut onto the crochet hook.



2. Chain Stitch (Abbreviated 'ch')

The chain stitch is the basis for all crochet which is also called a foundation chain.



3. Slip Stitch (Abbreviated 'sl st')

The slip stitch is the flattest or smallest of all crochet stitches. You can use this stitch by slip-stitching the ends of a foundation chain to form a ring.



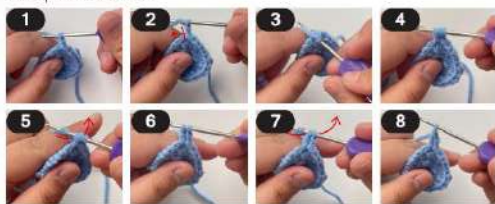
4. Single Crochet (Abbreviated 'sc')

The single crochet is the most fundamental of all stitches. Gather the yarn with your crochet hook and draw up the loop through the stitch. Wrap the yarn around the hook and pull it through two loops, leaving one loop on the hook.



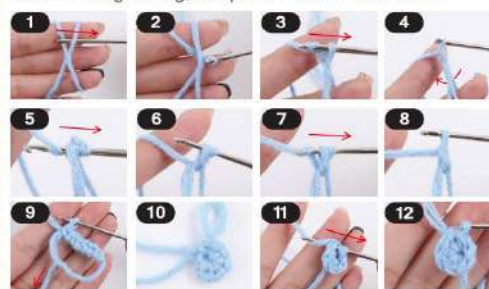
5. Double Crochet (Abbreviated 'Dc')

The double crochet is one of the most common crochet stitches and is about twice as tall as a single crochet. Wrap the yarn around the crochet hook. Then insert the crochet hook into the next stitch loop. Wrap the yarn with your crochet hook and pull the loop through the stitch (three loops now on the hook). Wrap the yarn around the hook again and pull it through the first two loops, leaving two loops on the hook. Then, wrap the yarn around the hook again and bring it through the remaining two loops to leave only one loop on the hook. Complete the row.



6. Magic Ring

A magic ring is an adjustable starting round used for crochet amigurumi patterns, granny squares and other patterns that work in crochet rounds. Form a loop with your yarn. You will need to loop the yarn around your fingers, insert the hook through the loop. Slide the crochet hook under right piece of yarn from right to left, use the hook tip to grab onto a left yarn, pull the yarn through the ring, make a chain stitch. Put your first row of stitches into the ring. For example, make 6 sc. Pull yarn ends. Hold the working end of the yarn taut while gently pulling down on the tail end. As you do this, the stitches should close together at the center, completing your magic ring. Finally, slip stitch into the first stitch. To close this round and start the remainder of your pattern, make a slip stitch into the first stitch of your ring, and proceed to the next round.



7. Round (Abbreviated 'Rd')

This continues the chain stitches into a circle. Each round starts with ch and ends with sl st.

8. Fasten Off (Abbreviated 'F/O')

Fasten off by pulling the yarn through the end stitch and pulling it taut. Cut off.



9. Sewing

Generally used for the connection of 2 parts. The plastic needle strap yarns are threaded in turn through the knots where the two parts need to be connected.



If details need to be stitched onto the finished product (such as mouth, eyes, etc), use the plastic needle and thread to create small stitches to represent facial features etc.



10. Weaving In/Invisible Close

Cut the yarn, leaving a long yarn end. Draw the end through the final loop on the hook and thread it onto a yarn needle. Weave your needle through the front loops only on the last round and pull tight. Weave remaining yarn into your piece.



Please note that all yarns need to be hidden behind the stitch.

STITCHES USED

ch	chain	()	repeat the step between the brackets
sl	slip stitch	x	repeat steps x times
sc	single crochet	F/o	fasten off
inc	increase crochet		
dc	double crochet		

MAKE A CROCHET TOTE BAG

1. Square pieces x 14

R1: (Please use the khaki yarns) 8 dc in magic ring [8 sts]

R2: (Please use the dark green yarns) (2 dc, 2 ch, 2 dc) x 8 times [32 sts]

R3: (Please use the beige yarns) [3 dc, ch, (3 dc, 2 ch, 3 dc, ch)] x 4 times [36 sts]

R4: (Please use the mustard yarns) [3 dc, ch, 3 dc, ch, (3 dc, 2 ch, 3 dc, ch)] x 4 times [48 sts] (Note: Each 3 dc is completed at each interval of R3, and (3 dc, 2 ch, 3 dc) is at each of 4 corners of R3.)

R5: (Please use the light green yarns) [3 dc, ch, 3 dc, ch, 3 dc, ch, (3 dc, 2 ch, 3 dc, ch)] x 4 times [60 sts] (Note: Each 3 dc is completed at each interval of R4, and (3 dc, 2 ch, 3 dc) is at each of 4 corners of R4.)



R6: (Please use the white yarns) [(3 dc, ch, 3 dc, ch, 3 dc, ch, 3 dc, ch, (3 dc, 2 ch, 3 dc, ch)] x 4 times [72 sts] (Note: Each 3 dc is completed at each interval of R5, and (3 dc, 2 ch, 3 dc) is at each of 4 corners of R5.)

Now you have finished 1x square pieces. Repeat the above steps to make 14x square pieces (Note: You can choose any colour combination you like).



2. Connect all square pieces

1. Take 2 of the squares and line the edges up.

2. Use the plastic needle and some extra thread to sew the pieces together. Pull the thread in between the loops of each square to connect. (Fig. 1-2)

3. Knot the thread at the end and cut. Hide the excess within one of the loops.

4. Continue with the rest of the squares to connect all square pieces. (Fig. 3-4)



3. Edge

(Please use the white yarns)

R1-2: (3 dc, 1 ch) x 42 times [126 sts]

R3: 126 dc [126 sts]

R4: 126 sc [126 sts]



4. Bag straps x 2

(Please use the white yarns)

1. Knot 2 white yarns and make 2 ch.

2. Hook 1 sc on the first ch, flip it over, and hook 1 ch on the second ch. (Fig. 2)

3. Please follow step 2 and keep repeating.

Turn the yarns over and make 1 sc on the previous knots until the length reaches about 58cm.

4. Make 1 sl st in the last knot, please reserve 15cm length of yarns for later sewing.

5. Repeat the above steps to make 2x bag straps (Note: You can adjust any length you like.)



5. Sew the bag straps on the tote bag



MADE IN CHINA

CUSTOMER SERVICE:

KMART AU: 1800 124 125

KMART NZ: 0800 945 995

TARGET AU: 1300 753 567

K: 43-494-422

T: 70-293-548

anko

DIY Crochet Tote Bag Kit

14+

Instruction Manual



WHAT'S IN THE BOX

1. Crochet yarn x 10
2. Crochet hook x 1
3. Plastic needle x 1
4. Ring stitch marker x 4