

anko

Instruction Manual

Tri-mode Wireless Gaming Mouse

K: 43499755 | T: 70363593

(Model: JLR-79849)



Product specification:

- Input Rating: 5V, 0.5A(Wired mode)
- Charging time: 1-2 hours
- Play time up to 20 hours for wireless mode
- 1.5M USB-C charging cable
- 2.4GHz wireless technology
- Bluetooth®: Version 5.3
- Resolution: 800/1600(Default)/2400/4800/6400/10000DPI
- Working distance up to 10m, 360° degree (without any obstructions)
- Battery: Built-in 300mAh lithium battery

Supports:

Windows, Mas OS, operating system

Product overview



- 1. Right Button
- 2. Left Button
- 3. Scroll Button
- 4. Forward Button
- 5. Backward Button
- 6. DPI Button/Indicator
- 7. Mode Switch Button
- 8. Polling Rate Button
- 9. USB receiver compartment

Operation Instructions

This device can be connected with three different modes (2.4GHz, Bluetooth, Wired), please switch the-modes by pushing Mode switch button.

- **Mode Switch Button:**
 - Switch UP to 2.4GHz Wireless mode and the green DPI indicator lights up.
 - Switch to MIDDLE to turn on Wired Mode and use the provided USB-C cable to connect a free USB port on the computer and mouse to use.
 - Switch DOWN to Bluetooth mode and the blue DPI indicator lights up.

➤ Polling Rate Button

The button can set the polling rate with different mode as your need.

- Wired: 125Hz, 250Hz, 500Hz, 1000Hz (default)
- 2.4G: 125Hz, 250Hz, 500Hz, 1000Hz (default)
- BT: 125Hz

Note: The button can also set the polling rate but it can't show the Hz on software. It suggests to set the polling rate on software as it can display the exact Hz as you set.

➤ Sleep Mode (Only working under 2.4GHz mold) :

- Mouse will be in a shallow sleep if there is no action after 1minute. Please press any key or move the mouse to wake up.
- Mouse will be in a deep sleep if there is no action after 5 minutes (default setting). Please press any key to wake up

➤ Low voltage alarm

- When the battery voltage is low, the red low-voltage indicator flashes 1 second/time and indicates to charge the mouse;
- The mouse automatically shuts down when the battery is no power.

Connection Ways:

➤ 2.4GHz Connecting Way

- Push up the mode switch button to 2.4GHz Wireless mode
- Remove the bottom cover of mouse and find the USB receiver.
- Plug the USB receiver into a free USB port on the PC and the driver will be installed automatically for a few seconds, then you can use it in 2.4GHz mode

➤ Wired Mouse Connecting Way

- Push the mode switch button to MIDDLE to turn on the Wired Mode.
- Plug the USB-A head of cable into a free computer's USB interface, and plug USB-C head into the mouse.
- The PC will recognize the receiver and install the driver automatically.

➤ Bluetooth Connecting Way

- Push down the mode switch button to-Bluetooth mode
- Long press "DPI" key more than 3 seconds, and the DPI blue light is flashing to enter the matching status.
- Click Bluetooth icon on the task bar on your laptop, then click "Add a device" Or Click "Start" button of computer → select "settings" → turn on" Bluetooth button" → Search Bluetooth devices/add a device to find the mouse name "anko43499755", Click it to match successfully and you can use it in Bluetooth mode.

Charging

- Plug in the provided USB-C cable to the USB-C port of mouse, connect the other end of USB-C cable into the free USB-A port, the indicator will be red all the time during charging, and the indicator will be current DPI light after fully charged.
- It takes 1-2 hours to fully charge the product.
- Should use the specified 5V/1A charger (not included), and other types of adapters

may conflict with this product

- Regular charging the product for every month is to ensure the life of the product, while pro-longed period of idle or low battery level may lead to battery life issue.
- Only use the provided charging cable to charge the product
- Built-in battery is not removable and replaceable, if damaged should contact service and repair.

Customized Software- Only compatible with Windows system

For more customized functions, please visit below to download and install the software.

<http://www.intraindustry.com/downloads.html>



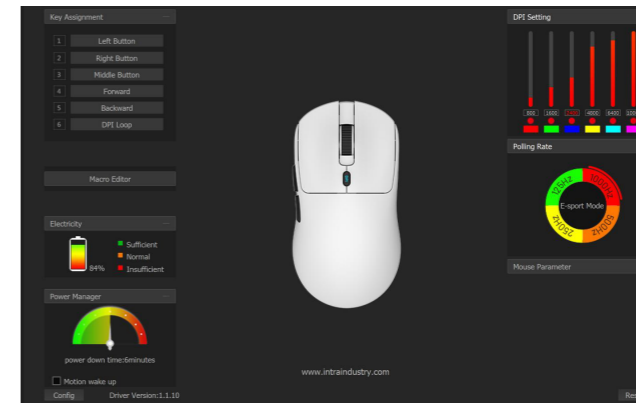
Main interface of Driver and functions description:

After install "43499755 Wireless Gaming Mouse.exe", double click it to enter the program.



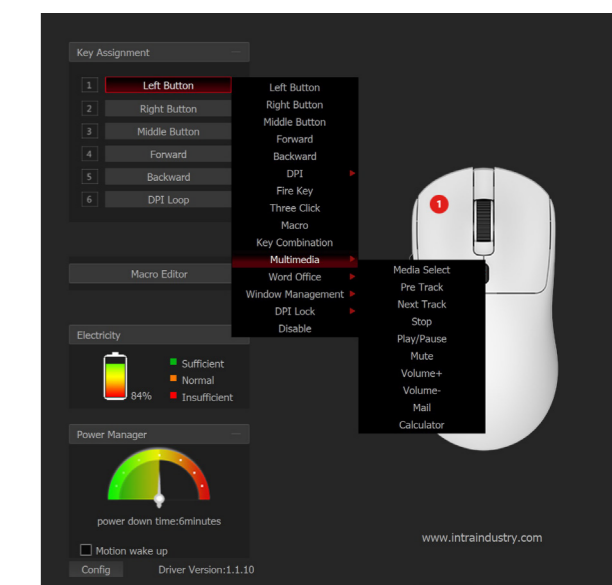
The main features include:

- 1) Key Assignment 2) DPI Setting 3)Others Setting 4) Macro Editor



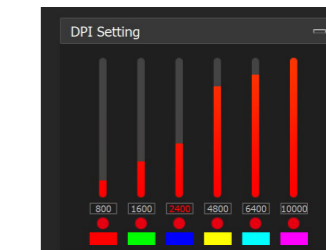
Key Assignment

Set the functions as needed for all the buttons.



DPI

- Support 6 gear DPI adjustment, each gear adjustable range (200-10000), step unit: 100 DPI.

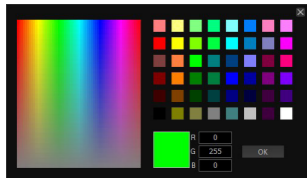


- DPI Setting gear 1-6, each gear can set the desired color.

Package Contents

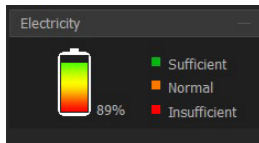
- ① Gaming mouse
- ② User manual
- ③ Charging cable
- ④ USB receiver

Please read all the information carefully before you use the product and keep the manual for future reference.



Others Setting

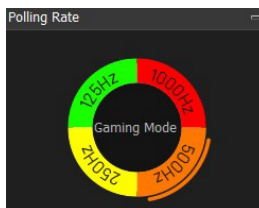
- Battery Indicator: Displays the current power of the mouse.



- Power manager: Set the sleep time of the mouse.



- Polling rate: Set the rate of return of the mouse.

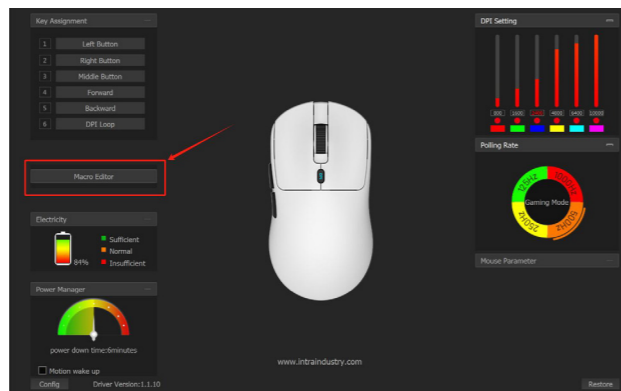


Note: It suggests to set the polling rate on software as it can display the exact Hz as you set. The button can also set the polling rate but it can't show the Hz on software.

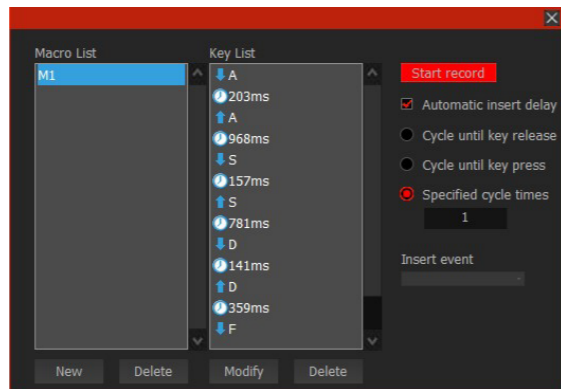
Macro Manager

Add any function you need to the buttons.

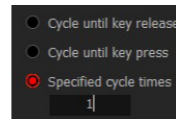
- Click the "Macro Editor".



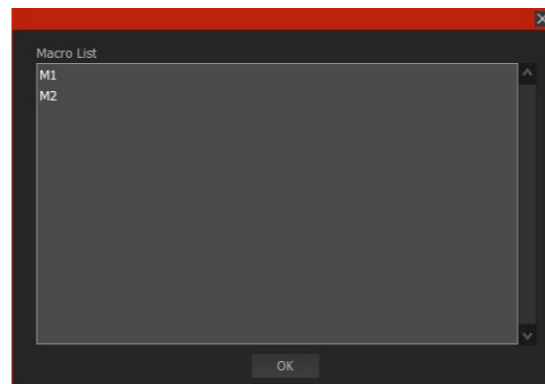
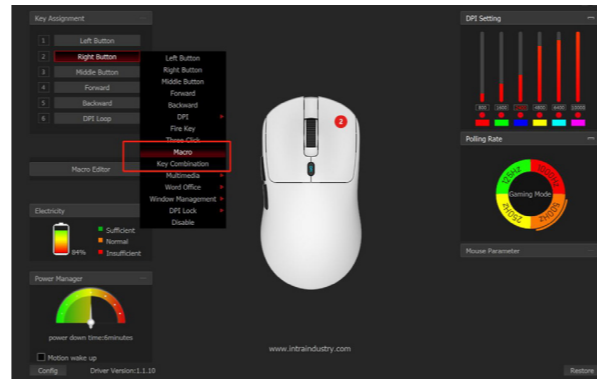
- Name the macro setting on the follow picture shows. Just take "M1" for example, — Click "New " to create a Marco, and name it. Click "Start Record" to start recording, input keys you want to define then click "Stop Record" to finish recording.
- Double-click the defined macro in "Key List" to modify the current delay or edit the current macro.
- If you want to insert additional data, select where to insert in the action list and Click "Insert event" to insert mouse keys (left, middle, right) and delay and keyboard keys.



- There are three sending modes for macro commands to choose from, as shown in the following figure.



- Macro application: Bind an already defined macro to the key that you want to bind.



- After setting up, drive AutoSaved.

Uninstall

Open the control panel and open the "Add or Remove Programs" Windows , find "43499755 Wireless Gaming Mouse.exe" and click "delete" to complete the uninstall program.

Safety Instructions:

Please read the instruction manual before using this device and follow all the safety instructions to avoid damage caused by improper use.

- Keep the instruction manual for future reference. Should this device be given to a third party, then this instruction manual must also be handed over.
- Only use this appliance indoors
- Keep the appliance away from all hot surfaces and naked flames.
- Always put the appliance on a level, stable, clean, dry surface. Protect the appliance from extreme heat and cold, dust, direct sunlight, humidity and drops or jets of water.
- Do not immerse the appliance in water or in other liquids.
- Do not open the housing under any circumstances.
- Do not introduce any objects into the interior of the housing.
- Should the device malfunction due to electrostatic discharge or a short power surge, disconnect it from your computer and then reconnect it again.

12 Month Warranty

Thank you for your purchase.

Your new product is warranted to be free from defects in materials and workmanship for the period stated above, from the date of purchase, provided that the product is used in accordance with accompanying recommendations or instructions where provided. This warranty is in addition to your rights under the Australian Consumer Law.

For New Zealand customers, this warranty is in addition to statutory rights observed under New Zealand legislation.

We will provide you with your choice of a refund, repair (where possible) or exchange (availability dependent) for this product if it becomes defective within the warranty period. The business will bear the reasonable expense of claiming the warranty.

This warranty will no longer apply where the defect is a result of alteration, accident, misuse, abuse or neglect.

Please retain your receipt as proof of purchase and contact our Customer Service Centre as listed below, for the entity you purchased this product from, for any difficulties with your product. Warranty claims and claims for expense incurred in returning this product can be addressed to the respective Customer Service Centre.

Our goods come with guarantees that cannot be excluded under the Australian Consumer Law. You are entitled to a replacement or refund for a major failure and compensation for any other reasonably foreseeable loss or damage. You are also entitled to have the goods repaired or replaced if the goods fail to be of acceptable quality and the failure does not amount to a major failure.

Contact for Kmart purchases	Contact for Target purchases
Kmart Australia Ltd. C/- Customer Service Centre 690 Springvale Road, Mulgrave Vic 3170 Customer Service: 1800 124 125 (Australia) or 0800 945 995 (New Zealand) or via Customer Help at kmart.com.au	Target Australia Pty Ltd C/- Customer Service Centre 2 Kendall Street, Williams Landing, Vic, 3027 Customer Service: 1300 753 567 or via Customer Help at target.com.au/help/contact-us