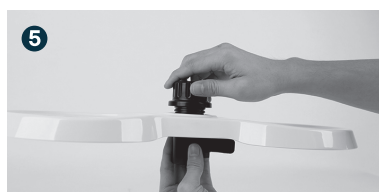
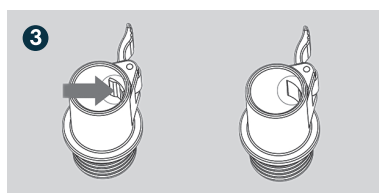


anko

Pet Telescopic Feeder

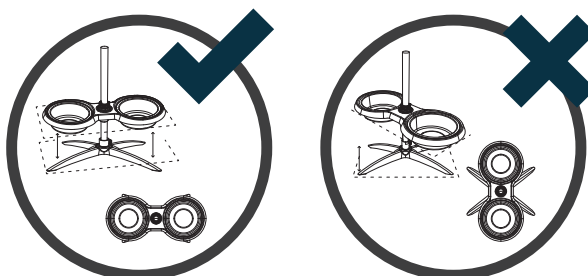


Closed quick release



Opened quick release

- 1 Turn the quick release fastener with sealing ring in a counter clockwise direction to disassemble into two parts.
- 2 Insert quick release with winch from above into the opening of the melamine stand and reconnect it to the counterpart.
- 3 Press the lock on the inside of the quick release fastener towards the exterior in order to ensure proper functioning with the stainless steel rod.
- 4 Then insert the stainless steel rod from above into the opening of the quick release fastener and fasten the rod with the quick release.
- 5 Turn second quick release fastener counter clockwise to disassemble into two parts. Now feed the quick release with winch from below through the opening of the melamine cup holder and reconnect with the counterpart.
- 6 Then place the melamine cup holder on the quick-release so that the fixing part is correctly positioned in the fixing cut-out provided! The quick release can now be put downwards on the stainless steel rod. Select the desired height of the cup holder. Select the desired height of the cup holder and fix them with the quick-release fastener.
- 7 Finally, place the bowls into the holders.



- ✓ Align the bowls directly above the Doggy Bar stand as shown in the picture.
- ✗ If positioned incorrectly, the Doggy Bar could tip over.

WARNING: For your pet's safety, inspect regularly and remove if damaged.

Content:

- ① Stainless steel rod
- ② Melamine cup holder
- ③ Melamine stand
- ④ Two stainless steel bowls with non-slip silicone rings
- ⑤ Two quick release fasteners with a sealing ring